

This drawing, as an instrument of service, is provided by and is the property of Graziani + Corazza Architects Inc. The contractor must verify and accept responsibility for all dimensions and conditions on site and must notify Graziani + Corazza Architects Inc. of any variations from the supplied information. Graziani + Corazza Architects Inc. is not responsible for the accuracy of survey, structural, mechanical, electrical, etc., engineering information shown on this drawing. Refer to the appropriate engineering drawings before proceeding with the work. Construction must conform to all applicable codes and requirements of the authorities having jurisdiction. Unless otherwise noted, no investigation has been undertaken or reported on by this office in regards to the environmental condition of this site. This drawing is not to be used for construction purposes until countersigned by the Architect.

This drawing is not to be scaled. All architectural symbols indicated on this drawing are graphic representations only.

- | | | |
|-----------------|----------------------------|----|
| 1. SEPT.22.2014 | ISSUED TO CONSULTANTS | BG |
| 2. OCT.7.2014 | RE-ISSUED TO CONSULTANTS | BG |
| 3. JAN.20.2015 | ISSUED FOR RE-ZONING (ZBA) | BG |


GRAZIANI + CORAZZA ARCHITECTS INC.
 1100 Sheppard Ave. E., Suite 100, Scarborough, Ontario M1S 1K3
 Phone: 905.795.2601 Fax: 905.795.2844 www.gc-architects.com

PROPOSED RESIDENTIAL DEVELOPMENT
IOTP DEVELOPMENT INC.
 TORONTO ONTARIO
 Project Architect: **B. GRAZIANI**
 Assistant Designer: **M. FAUSTINO**
 Drawn By: **C. BARBOSA-CARLOS**
 Checked By: **D. BIASE**
 Plot Date: **Jan 20, 2015**
 Job #: **1216.14**

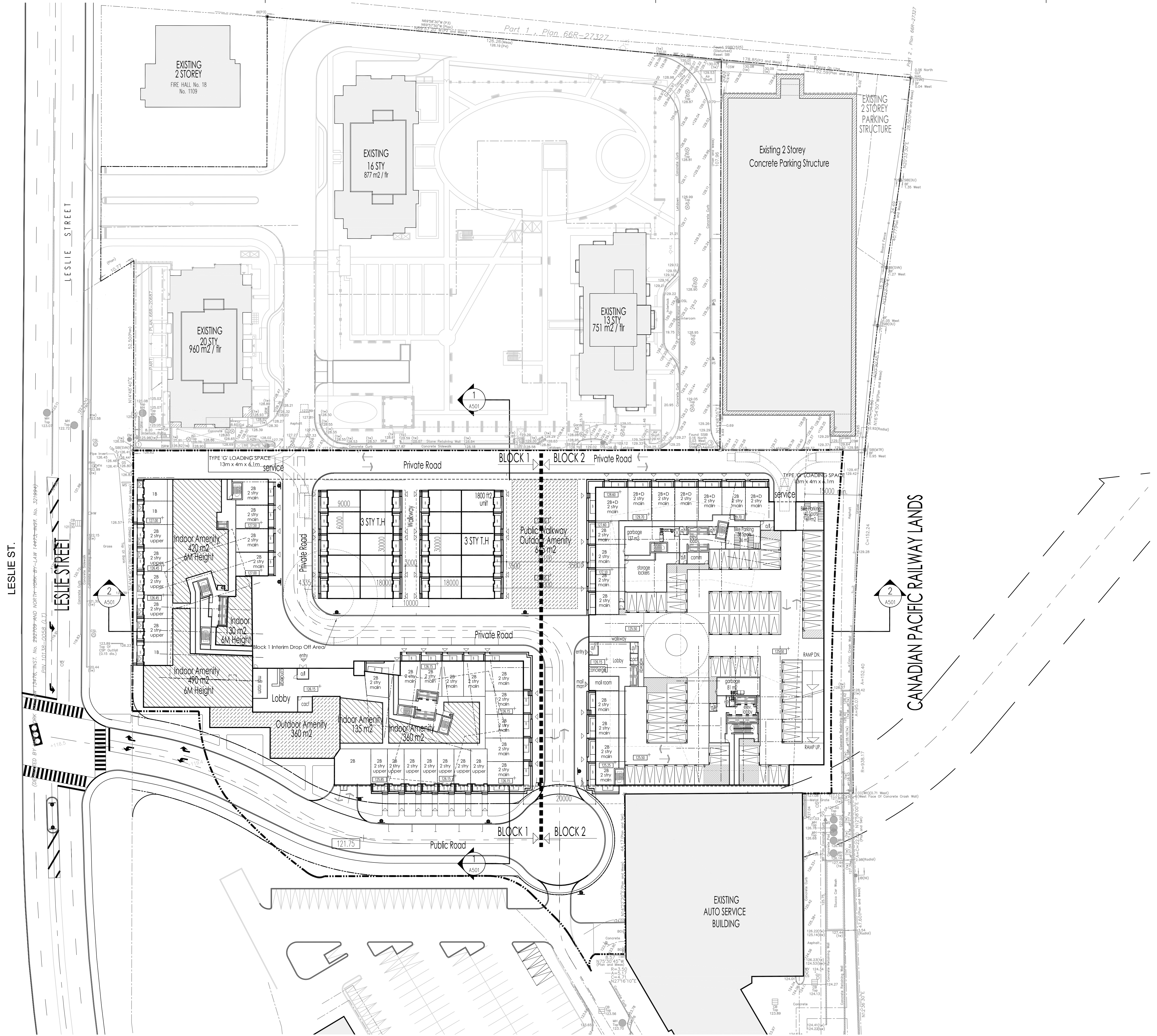
P1 PARKING PLAN

1:500 **A204**

This drawing, as an instrument of service, is provided by and is the property of Graziani + Corazza Architects Inc. The contractor must verify and accept responsibility for all dimensions and conditions on site and must notify Graziani + Corazza Architects Inc. of any variations from the supplied information. Graziani + Corazza Architects Inc. is not responsible for the accuracy of survey, structural, mechanical, electrical, etc., engineering information shown on this drawing. Refer to the appropriate engineering drawings before proceeding with the work. Construction must conform to all applicable codes and requirements of the authorities having jurisdiction. Unless otherwise noted, no investigation has been undertaken or reported on by this office in regards to the environmental condition of this site. This drawing is not to be used for construction purposes until countersigned by the Architect.

This drawing is not to be scaled. All architectural symbols indicated on this drawing are graphic representations only.

- | | | |
|-----------------|----------------------------|----|
| 1. SEPT.22.2014 | ISSUED TO CONSULTANTS | BG |
| 2. OCT.7.2014 | RE-ISSUED TO CONSULTANTS | BG |
| 3. JAN.20.2015 | ISSUED FOR RE-ZONING (ZBA) | BG |




**GRAZIANI
+
CORAZZA**
 ARCHITECTS INC.

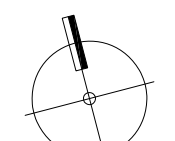
1120 Sheppard Ave. E., Suite 100, Scarborough, Ontario M1S 1K3
 Phone: 905.795.2601 Fax: 905.795.2844 www.gc-architects.com

PROPOSED RESIDENTIAL DEVELOPMENT
IOTP
 DEVELOPMENT INC.

TORONTO ONTARIO

Project Architect: **B.GRAZIANI**
 Assistant Designer: **M.FAUSTINO**
 Drawn By: **C.BARBOSA-CARLOS**
 Checked By: **D. BIASE**
 Plot Date: **Jan 20, 2015**
 Job #: **1216.14**

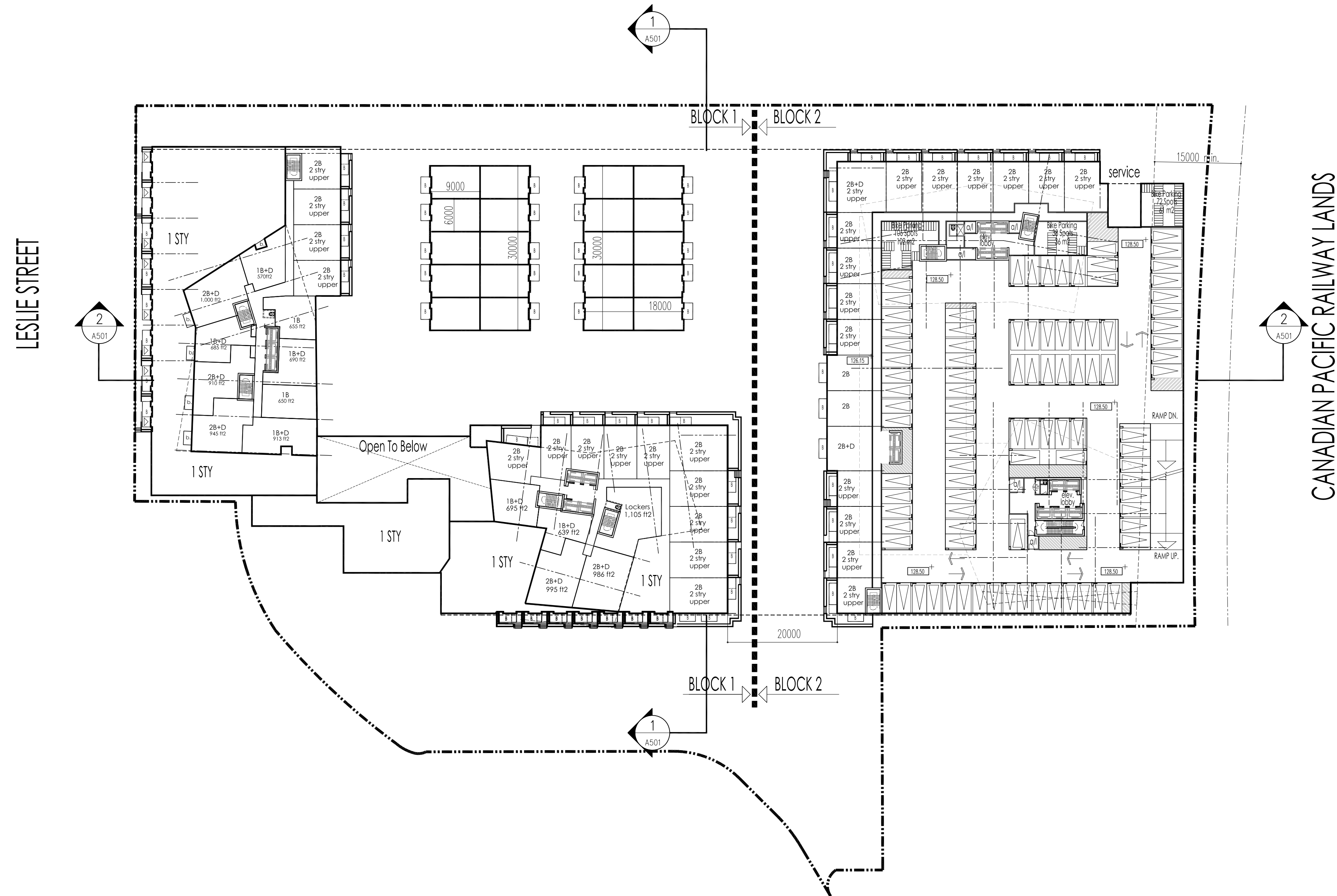
GROUND FLOOR PLAN


 1:500 **A301**

This drawing, as an instrument of service, is provided by and is the property of Graziani + Corazza Architects Inc. The contractor must verify and accept responsibility for all dimensions and conditions on site and must notify Graziani + Corazza Architects Inc. of any variations from the supplied information. Graziani + Corazza Architects Inc. is not responsible for the accuracy of survey, structural, mechanical, electrical, etc., engineering information shown on this drawing. Refer to the appropriate engineering drawings before proceeding with the work. Construction must conform to all applicable codes and requirements of the authorities having jurisdiction. Unless otherwise noted, no investigation has been undertaken or reported on by this office in regards to the environmental condition of this site. This drawing is not to be used for construction purposes until countersigned by the Architect.

This drawing is not to be scaled. All architectural symbols indicated on this drawing are graphic representations only.

- | | | |
|-----------------|----------------------------|----|
| 1. SEPT.22.2014 | ISSUED TO CONSULTANTS | BG |
| 2. OCT.7.2014 | RE-ISSUED TO CONSULTANTS | BG |
| 3. JAN.20.2015 | ISSUED FOR RE-ZONING (ZBA) | BG |





**GRAZIANI
+
CORAZZA
ARCHITECTS INC.**

1100 Sheppard Ave. E., Suite 100, Scarborough, Ontario M1S 1L3
 Phone: 905.795.2601 Fax: 905.795.2844 www.gc-architects.com

PROPOSED RESIDENTIAL DEVELOPMENT
IOTP
 DEVELOPMENT INC.

TORONTO	ONTARIO
Project Architect:	B.GRAZIANI
Assistant Designer:	M.FAUSTINO
Drawn By:	C.BARBOSA-CARLOS
Checked By:	D. BIASE
Plot Date:	Jan 20, 2015
Job #	1216.14

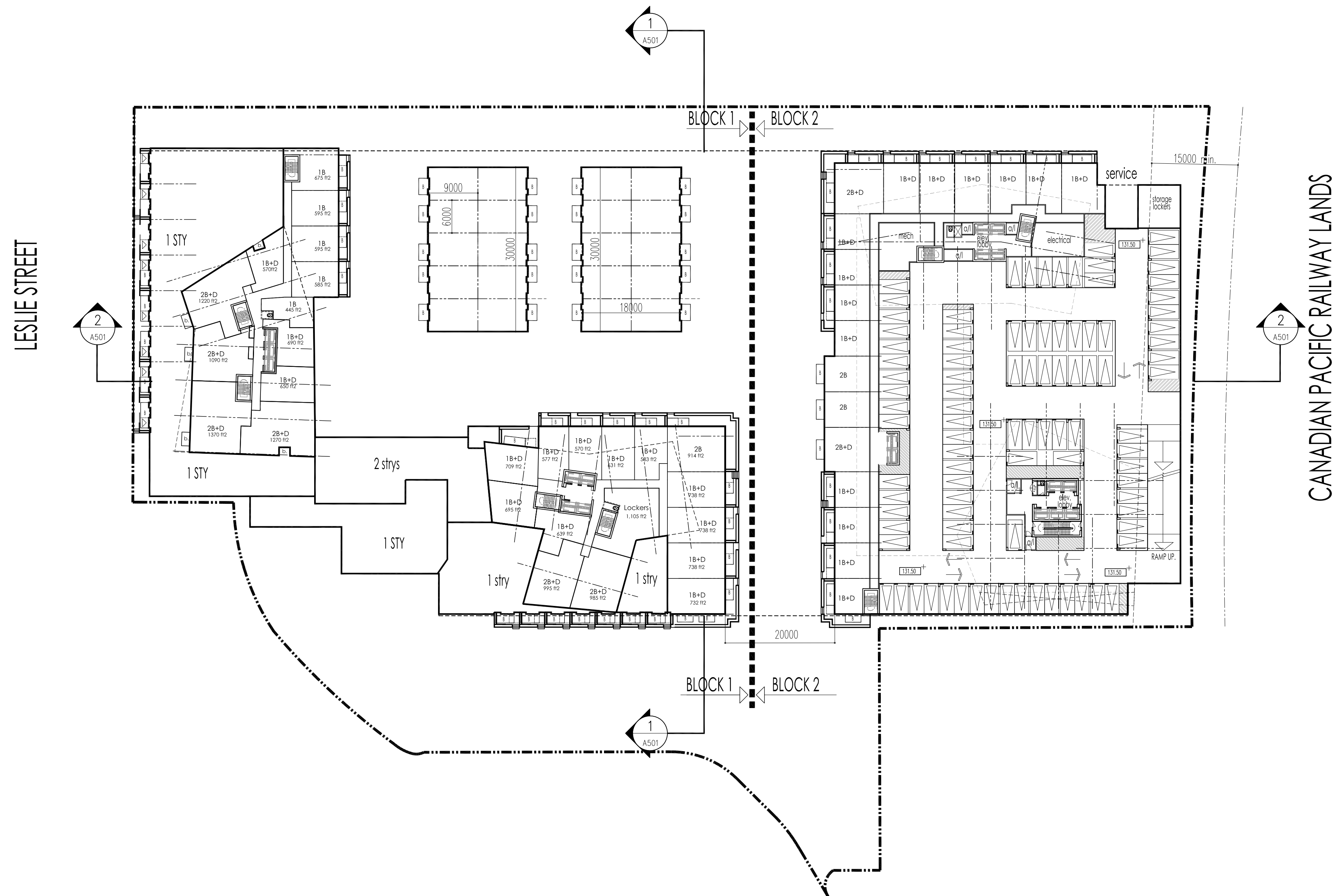
2ND FLOOR PLAN

 1:500 **A302**

This drawing, as an instrument of service, is provided by and is the property of Graziani + Corazza Architects Inc. The contractor must verify and accept responsibility for all dimensions and conditions on site and must notify Graziani + Corazza Architects Inc. of any variations from the supplied information. Graziani + Corazza Architects Inc. is not responsible for the accuracy of survey, structural, mechanical, electrical, etc., engineering information shown on this drawing. Refer to the appropriate engineering drawings before proceeding with the work. Construction must conform to all applicable codes and requirements of the authorities having jurisdiction. Unless otherwise noted, no investigation has been undertaken or reported on by this office in regards to the environmental condition of this site. This drawing is not to be used for construction purposes until countersigned by the Architect.

This drawing is not to be scaled. All architectural symbols indicated on this drawing are graphic representations only.

- 1. SEPT.22.2014 ISSUED TO CONSULTANTS BG
- 2. OCT.7.2014 RE-ISSUED TO CONSULTANTS BG
- 3. JAN.20.2015 ISSUED FOR RE-ZONING (2BA) BG





**GRAZIANI
+
CORAZZA**
 ARCHITECTS INC.

1120 Shawson Drive, Suite 100, Mississauga, Ontario L4W 1G3
 Phone: 905.795.2601 Fax: 905.795.2844 www.gc-architects.com

PROPOSED RESIDENTIAL DEVELOPMENT
IOTP
 DEVELOPMENT INC.

TORONTO ONTARIO
 Project Architect: **B.GRAZIANI**
 Assistant Designer: **M.FAUSTINO**
 Drawn By: **C.BARBOSA-CARLOS**
 Checked By: **D. BIASE**
 Plot Date: **Jan 20, 2015**
 Job #: **1216.14**

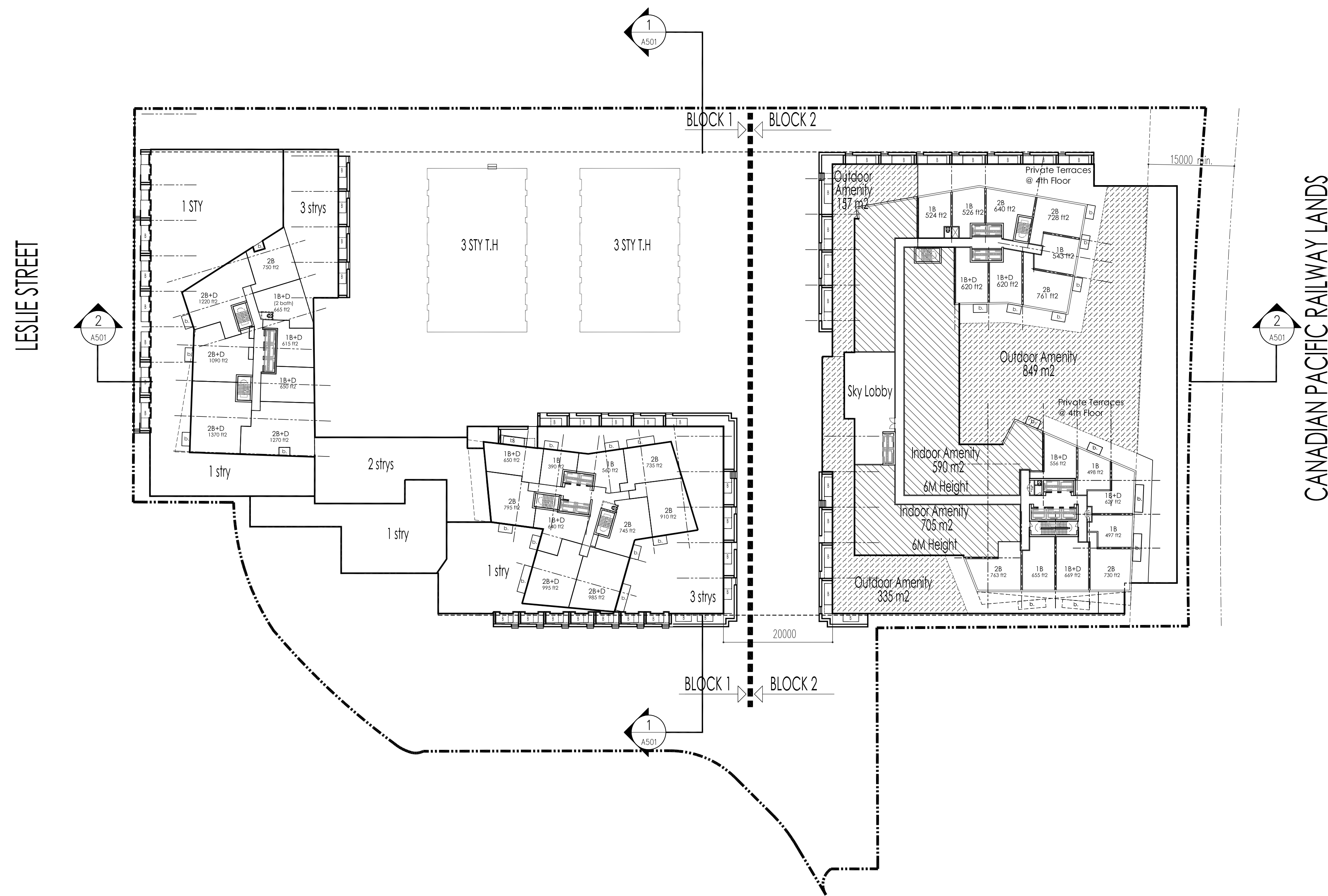
3RD FLOOR PLAN

 1:500 **A303**

This drawing, as an instrument of service, is provided by and is the property of Graziani + Corazza Architects Inc. The contractor must verify and accept responsibility for all dimensions and conditions on site and must notify Graziani + Corazza Architects Inc. of any variations from the supplied information. Graziani + Corazza Architects Inc. is not responsible for the accuracy of survey, structural, mechanical, electrical, etc., engineering information shown on this drawing. Refer to the appropriate engineering drawings before proceeding with the work. Construction must conform to all applicable codes and requirements of the authorities having jurisdiction. Unless otherwise noted, no investigation has been undertaken or reported on by this office in regards to the environmental condition of this site. This drawing is not to be used for construction purposes until countersigned by the Architect.

This drawing is not to be scaled. All architectural symbols indicated on this drawing are graphic representations only.

- | | | | |
|----|--------------|----------------------------|----|
| 1. | SEPT.22.2014 | ISSUED TO CONSULTANTS | BG |
| 2. | OCT.7.2014 | RE-ISSUED TO CONSULTANTS | BG |
| 3. | JAN.20.2015 | ISSUED FOR RE-ZONING (ZBA) | BG |





**GRAZIANI
+
CORAZZA**
 ARCHITECTS INC.

1100 Sheppard Ave. E., Suite 100, Scarborough, Ontario M1S 1L3
 Phone: 905.795.2601 Fax: 905.795.2844 www.gc-architects.com

PROPOSED RESIDENTIAL DEVELOPMENT
IOTP
 DEVELOPMENT INC.

TORONTO	ONTARIO
Project Architect:	B. GRAZIANI
Assistant Designer:	M. FAUSTINO
Drawn By:	C. BARBOSA-CARLOS
Checked By:	D. BIASE
Plot Date:	Jan 20, 2015
Job #	1216.14

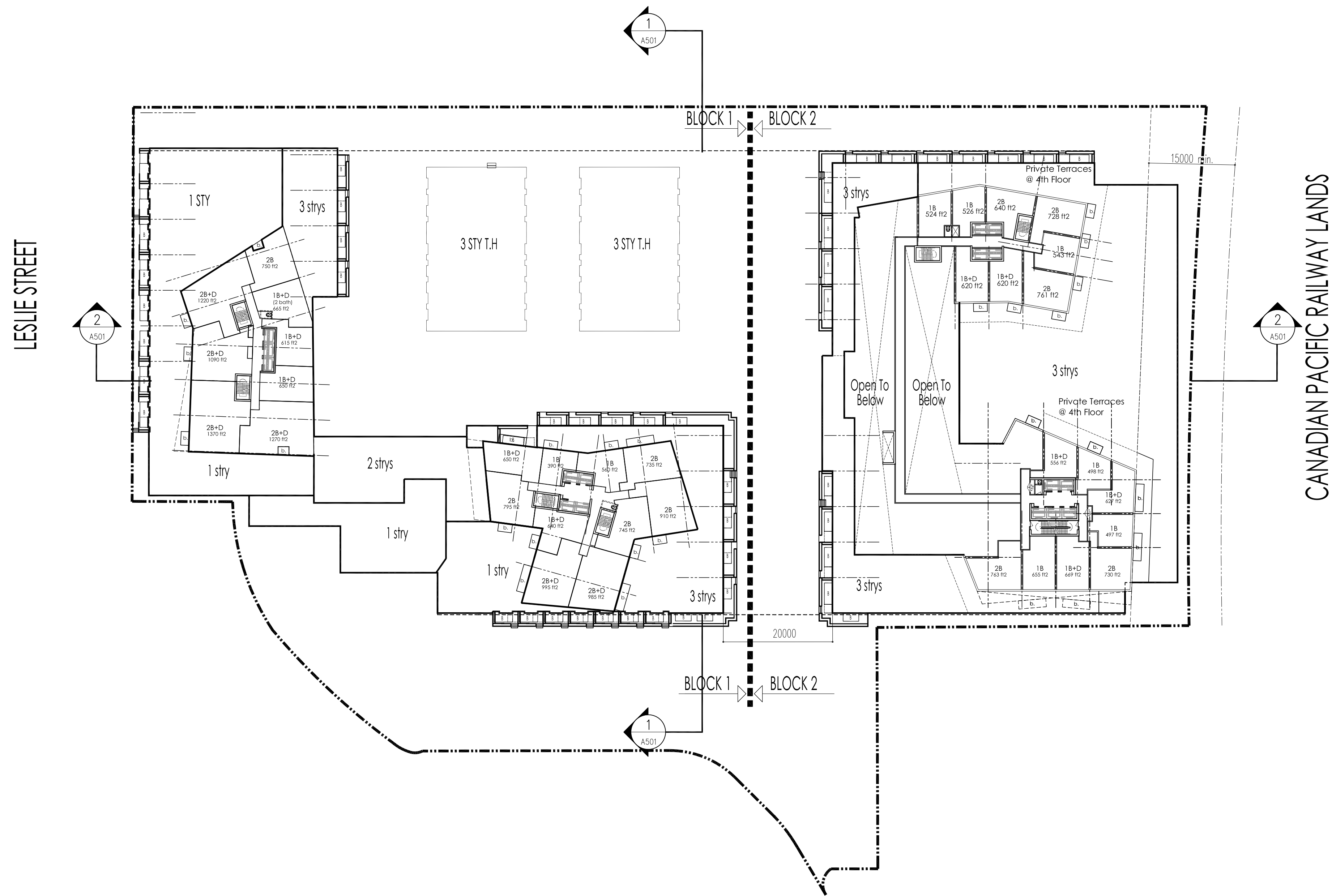
4TH FLOOR PLAN

 1:500 **A304**

This drawing, as an instrument of service, is provided by and is the property of Graziani + Corazza Architects Inc. The contractor must verify and accept responsibility for all dimensions and conditions on site and must notify Graziani + Corazza Architects Inc. of any variations from the supplied information. Graziani + Corazza Architects Inc. is not responsible for the accuracy of survey, structural, mechanical, electrical, etc., engineering information shown on this drawing. Refer to the appropriate engineering drawings before proceeding with the work. Construction must conform to all applicable codes and requirements of the authorities having jurisdiction. Unless otherwise noted, no investigation has been undertaken or reported on by this office in regards to the environmental condition of this site. This drawing is not to be used for construction purposes until countersigned by the Architect.

This drawing is not to be scaled. All architectural symbols indicated on this drawing are graphic representations only.

- | | | | |
|----|--------------|----------------------------|----|
| 1. | SEPT.22.2014 | ISSUED TO CONSULTANTS | BG |
| 2. | OCT.7.2014 | RE-ISSUED TO CONSULTANTS | BG |
| 3. | JAN.20.2015 | ISSUED FOR RE-ZONING (ZBA) | BG |





**GRAZIANI
+
CORAZZA**
 ARCHITECTS INC.

1100 Sheppard Ave. E., Suite 100, Scarborough, Ontario M1S 1L3
 Phone: 905.795.2601 Fax: 905.795.2844 www.gc-architects.com

PROPOSED RESIDENTIAL DEVELOPMENT
IOTP
 DEVELOPMENT INC.

TORONTO	ONTARIO
Project Architect:	B.GRAZIANI
Assistant Designer:	M.FAUSTINO
Drawn By:	C.BARBOSA-CARLOS
Checked By:	D. BIASE
Plot Date:	Jan 20, 2015
Job #	1216.14

5TH FLOOR PLAN

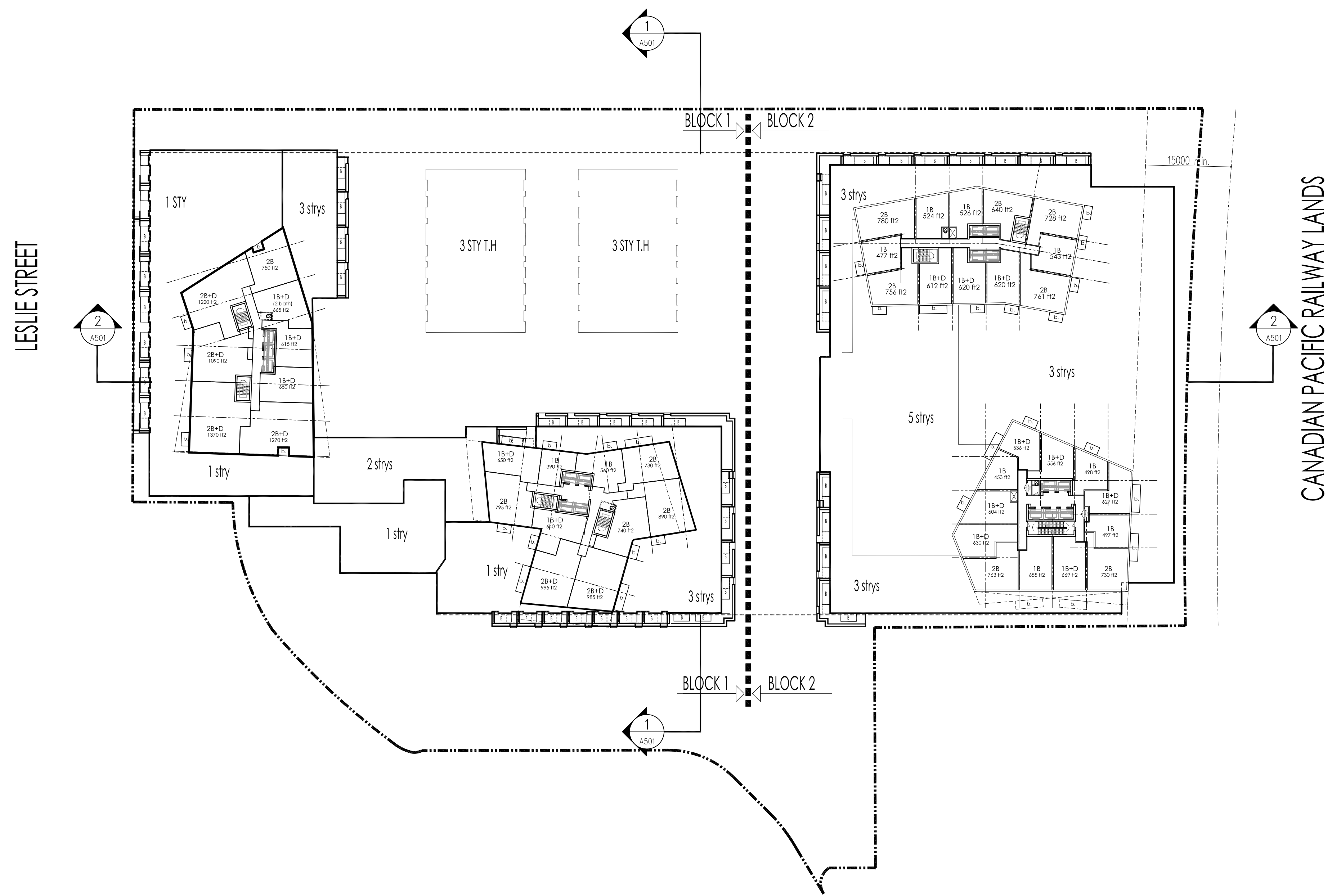

 1:500 **A305**

TILEBLOCK SIZE: 610 x 915

This drawing, as an instrument of service, is provided by and is the property of Graziani + Corazza Architects Inc. The contractor must verify and accept responsibility for all dimensions and conditions on site and must notify Graziani + Corazza Architects Inc. of any variations from the supplied information. Graziani + Corazza Architects Inc. is not responsible for the accuracy of survey, structural, mechanical, electrical, etc., engineering information shown on this drawing. Refer to the appropriate engineering drawings before proceeding with the work. Construction must conform to all applicable codes and requirements of the authorities having jurisdiction. Unless otherwise noted, no investigation has been undertaken or reported on by this office in regards to the environmental condition of this site. This drawing is not to be used for construction purposes until countersigned by the Architect.

This drawing is not to be scaled. All architectural symbols indicated on this drawing are graphic representations only.

- | | | |
|-----------------|----------------------------|----|
| 1. SEPT.22.2014 | ISSUED TO CONSULTANTS | BG |
| 2. OCT.7.2014 | RE-ISSUED TO CONSULTANTS | BG |
| 3. JAN.20.2015 | ISSUED FOR RE-ZONING (ZBA) | BG |





**GRAZIANI
+
CORAZZA**
 ARCHITECTS INC.

1120 Sheppard Ave. E., Suite 100, Scarborough, Ontario M1S 1L3
 Phone: 905.795.2601 Fax: 905.795.2844 www.gc-architects.com

PROPOSED RESIDENTIAL DEVELOPMENT
IOTP
 DEVELOPMENT INC.

TORONTO ONTARIO

Project Architect:	B. GRAZIANI
Assistant Designer:	M. FAUSTINO
Drawn By:	C. BARBOSA-CARLOS
Checked By:	D. BIASE
Plot Date:	Jan 20, 2015
Job #	1216.14

**TYPICAL FLOOR PLAN
(6TH FLOOR - ROOF)**

