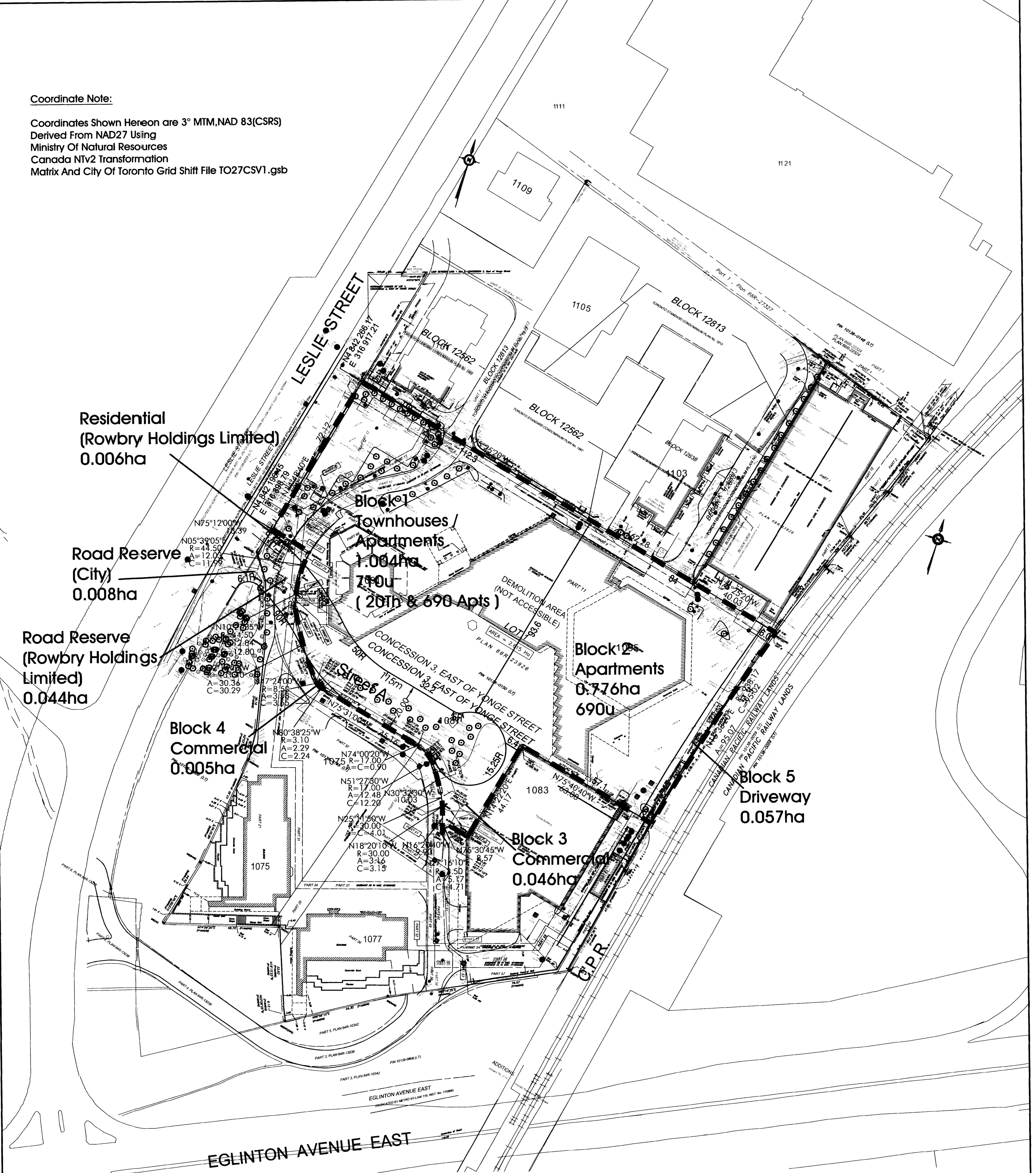


**Coordinate Note:**

Coordinates Shown Hereon are 3° MTM, NAD 83 (CSRS)  
 Derived From NAD27 Using  
 Ministry Of Natural Resources  
 Canada NTV2 Transformation  
 Matrix And City Of Toronto Grid Shift File TO27CSV1.gsb



Residential  
 (Rowby Holdings Limited)  
 0.006ha

Road Reserve  
 (City)  
 0.008ha

Road Reserve  
 (Rowby Holdings Limited)  
 0.044ha

Block 4  
 Commercial  
 0.005ha

Block 1  
 Townhouses /  
 Apartments  
 1.004ha  
 790u  
 (20th & 690 Apts)

Block 2  
 Apartments  
 0.776ha  
 690u

Block 3  
 Commercial  
 0.046ha

Block 5  
 Driveway  
 0.057ha

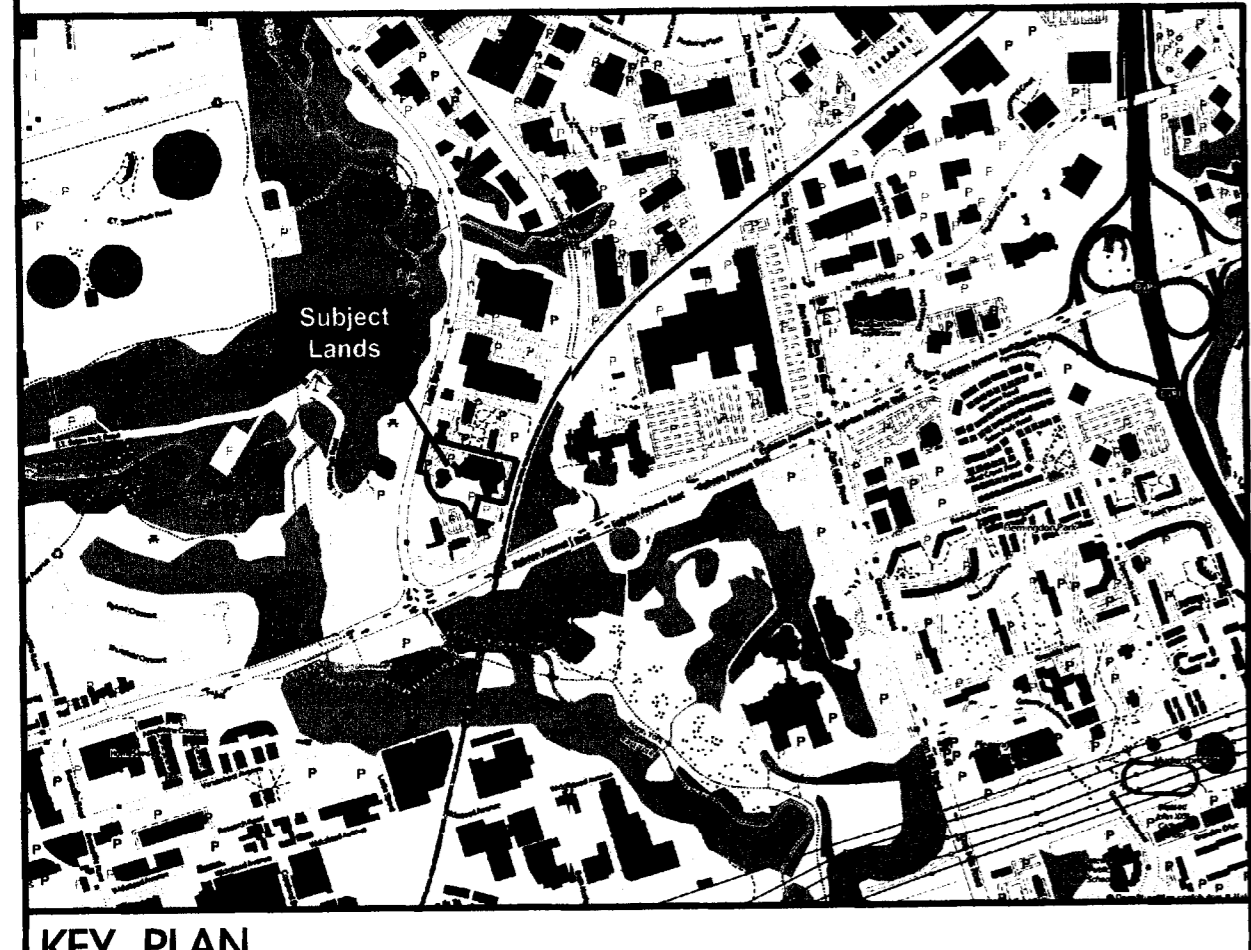
**AREA TABLE** 1475-16dp dated January 16, 2015

Townhouse / Apartments	Block 1	1.004
Apartments	Block 2	0.776
Commercial	Blocks 3, 4	0.051
Driveway	Block 5	0.057
20m ROW	115m	0.240
<b>TOTAL</b>		<b>2.128 ha</b>

**UNIT COUNT**

Townhouse	20
Apartments	1380
<b>TOTAL</b>	<b>1400 u</b>

**LEGEND**  
 Boundary of Subdivision



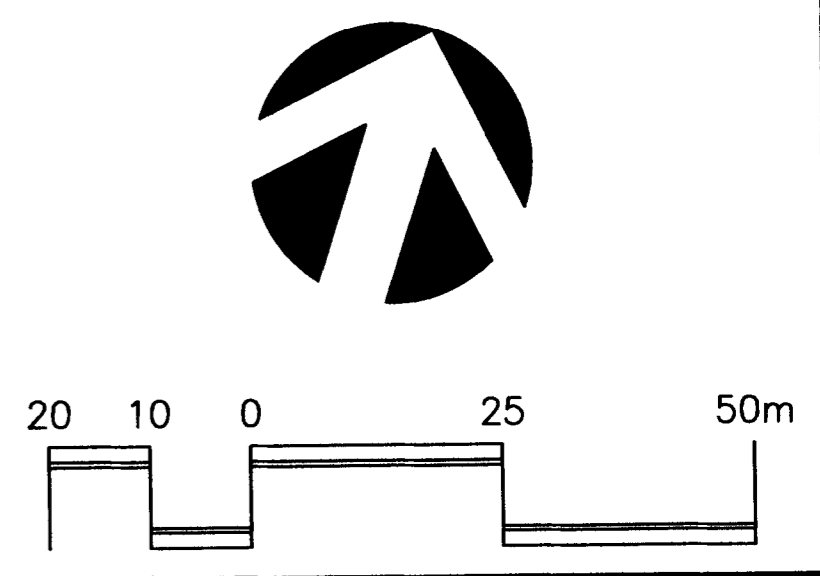
KEY PLAN

**NOTES**  
 All dimensions are in metres.  
 All area measurements are computer generated.  
 All elevations refer to Geodetic Datum.

- ADDITIONAL INFORMATION REQUIRED UNDER SECTION 51(17) OF THE PLANNING ACT**
- C. Additional land owned by the applicant in the vicinity is as shown on the key plan.
  - D. Townhouses, apartments, commercial, driveway & roads.
  - H. Piped water to be provided.
  - I. Clay loam soil.
  - K. Sanitary & storm sewers to be provided.

**SURVEYOR'S CERTIFICATE**  
 I certify that: the boundaries of the lands to be subdivided and their relationship to the adjacent lands are correctly shown.  
 Signature: [Signature] 22 01 15  
 Day Month Year

**OWNER'S AUTHORIZATION**  
 I/we, **IOTP DEVELOPMENT INC.**  
 being the registered owner(s) of the subject lands hereby authorize **BOUSFIELDS INC.** to prepare and submit a draft plan of subdivision for approval.  
 Signature: [Signature] 22 01 15  
 Day Month Year



**DRAFT PLAN OF PROPOSED SUBDIVISION**  
 PART OF LOT 1,  
 CONCESSION 3  
 EAST OF YONGE STREET,  
 CITY OF TORONTO

**BOUSFIELDS INC.**  
 3 Church Street, Suite 200  
 Toronto, Ontario M5E 1M2  
 P (416) 947-9744  
 F (416) 947-0781  
 E drafting@bousfields.ca

1 : 750 Scale  
 Jan. 16, 2015 Date  
 1475-16dp Drawing Number